

Trans-Atlantic Biomess

*How UK Climate Solutions Are Leading to
Forest Destruction in the Southern US*

Presented by Scot Quaranda, Campaign Director,
Dogwood Alliance





Southern Forests

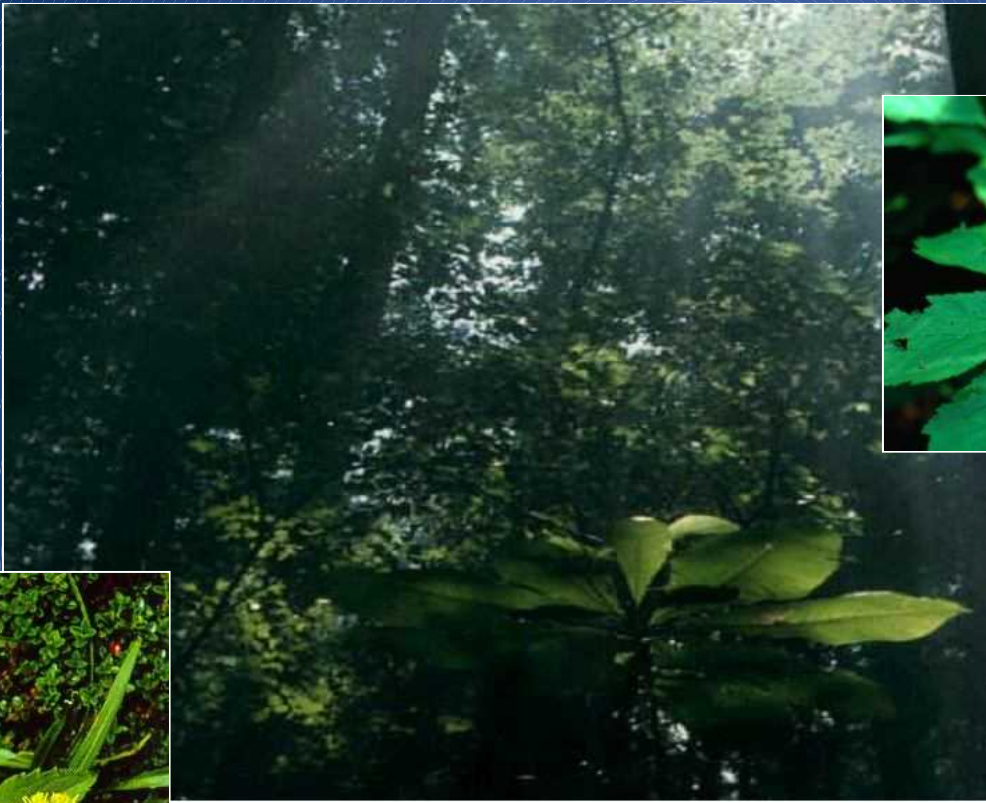


Southern Forests



- Highest concentration of tree species diversity in North America.
- Highest concentration of aquatic diversity in the continental US, including the richest temperate freshwater ecosystem in the world.
- Highest concentration of wetlands in the US (75% of which are forested).





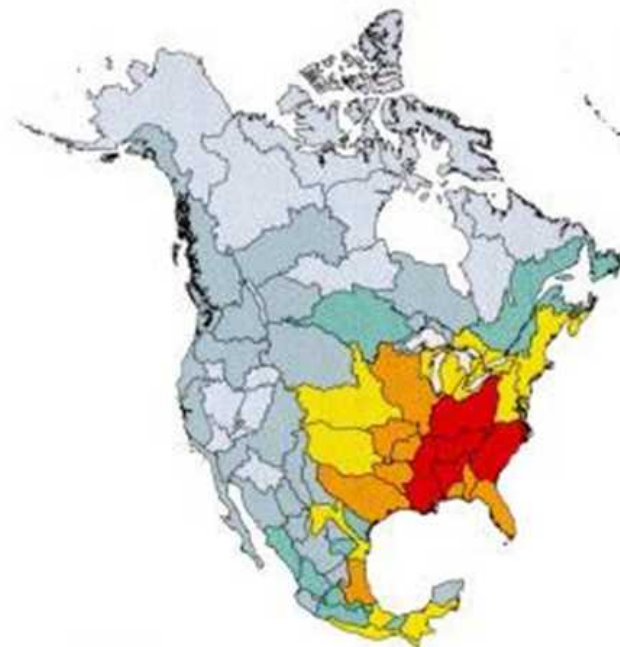
- **150** tree species
- **1400** herbaceous species
- **2,250** total plant species

“No where in America is there a greater variety of native plant communities, native plant species or rare and endemic plants...”

**The
Green
Swamp,
Great
Dismal
Swamp
and
Southeas
t Coast**



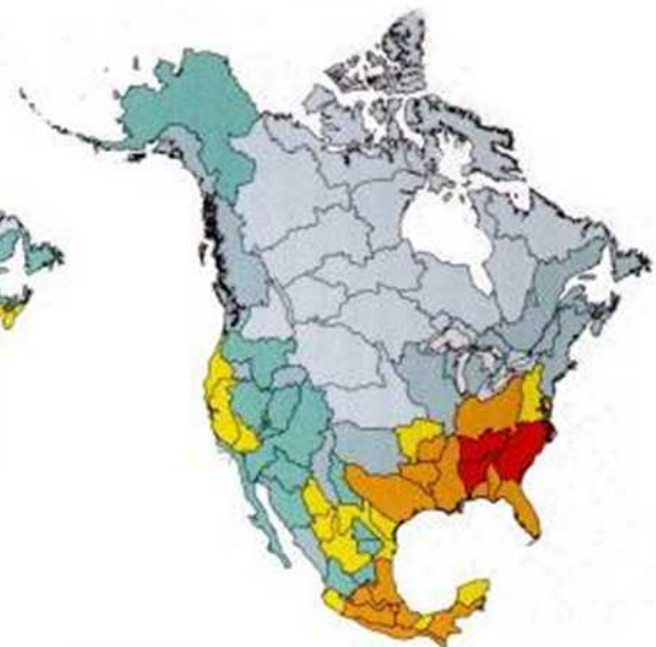




LEGEND



Figure 3.1 Total species richness.



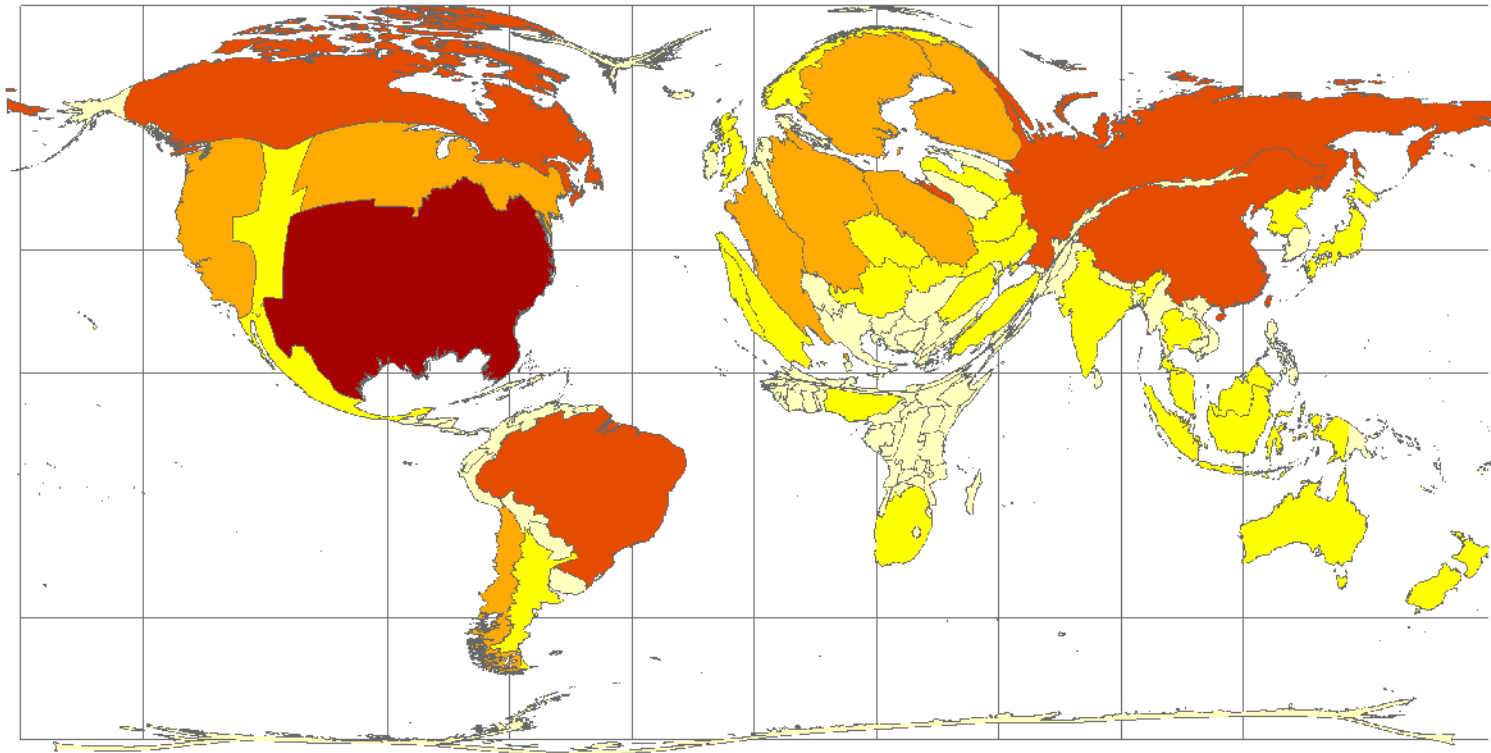
LEGEND



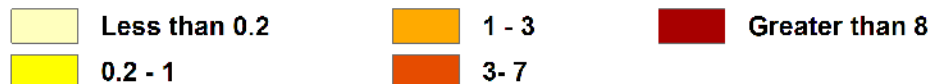
Figure 3.2 Total number of endemic species.

Global Industrial Roundwood Production (2006)

Size of Country/Region is Proportional to 2006 Production



Billions of Cubic Feet of Roundwood Produced



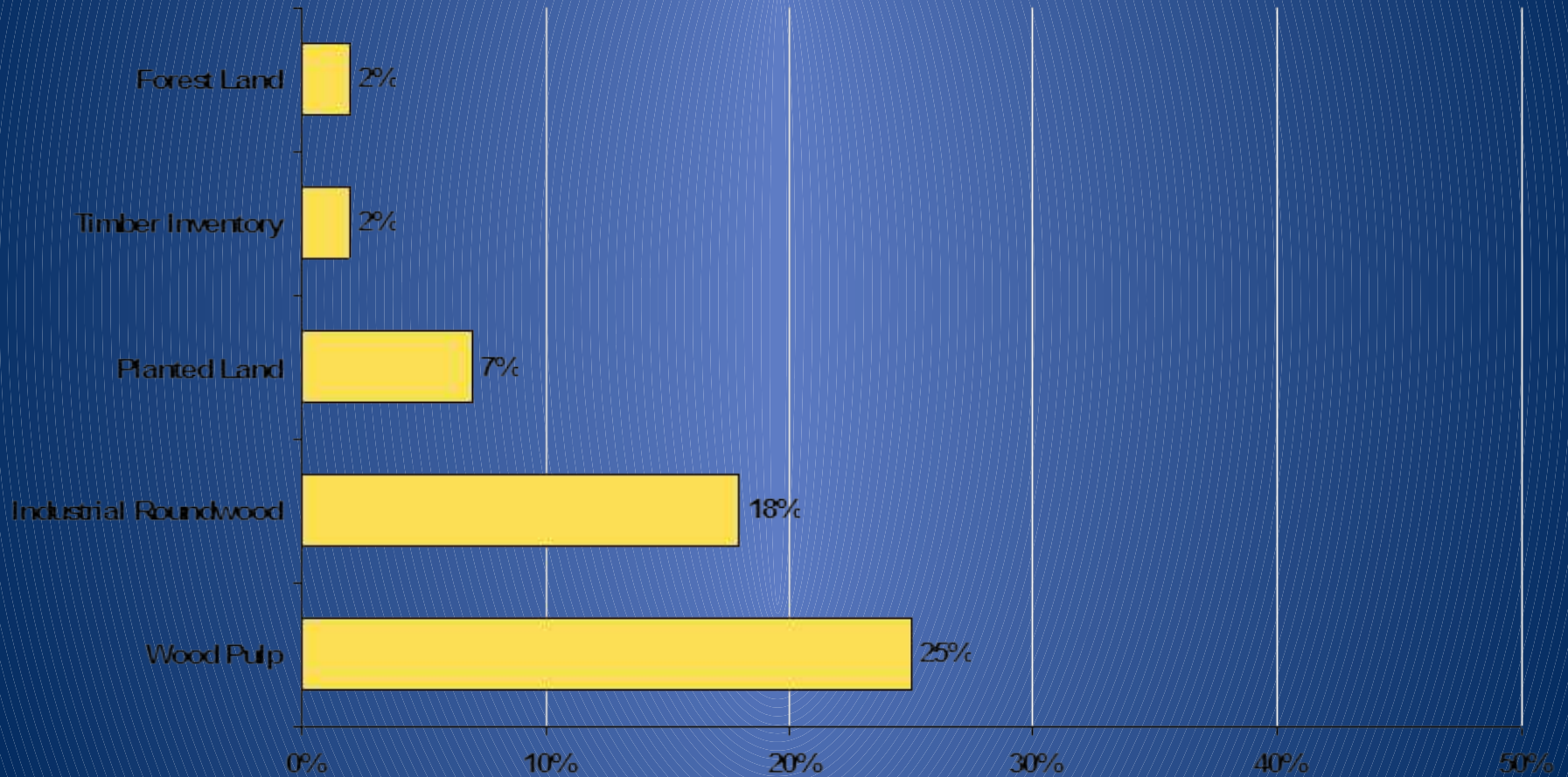
National level data source: Food and Agriculture Organization of the United Nations, Forest Statistics Division (UN FAO foresSTAT)

United States Regional level data source:
United States Forest Service Timber Products Output Database (USFS TPO)



WORLD
RESOURCES
INSTITUTE

Timber Production in the South



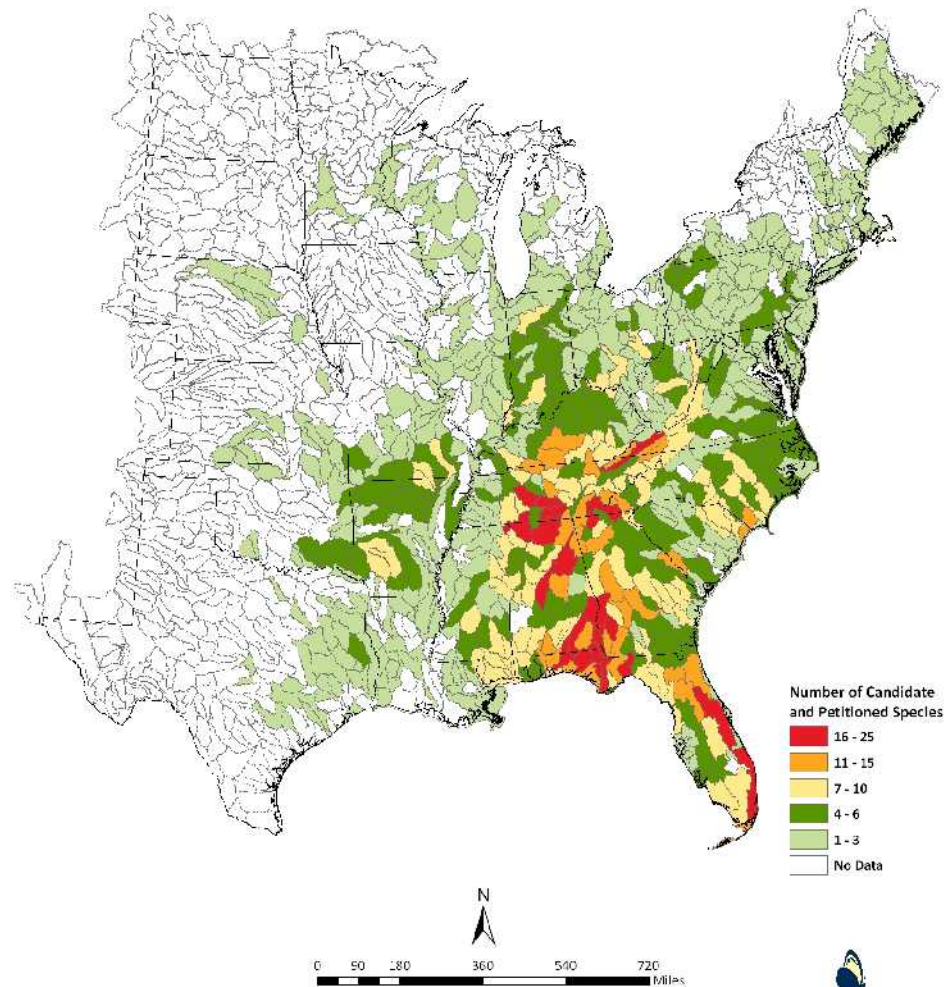




UGA4798076



Number of U.S. ESA Candidate and Petitioned Species by 8-Digit Watershed



Note: Includes species observed since 1970. Fish and mussel data is supplemented by NatureServe's fish and mussel range distribution database. Petitioned species include only the 274 petitioned in the southeast.


NatureServe
Source: NatureServe Central
Databases (January 2017)

BUFFALO BILL'S WILD WEST

AND CONGRESS OF ROUGH RIDERS OF THE WORLD.



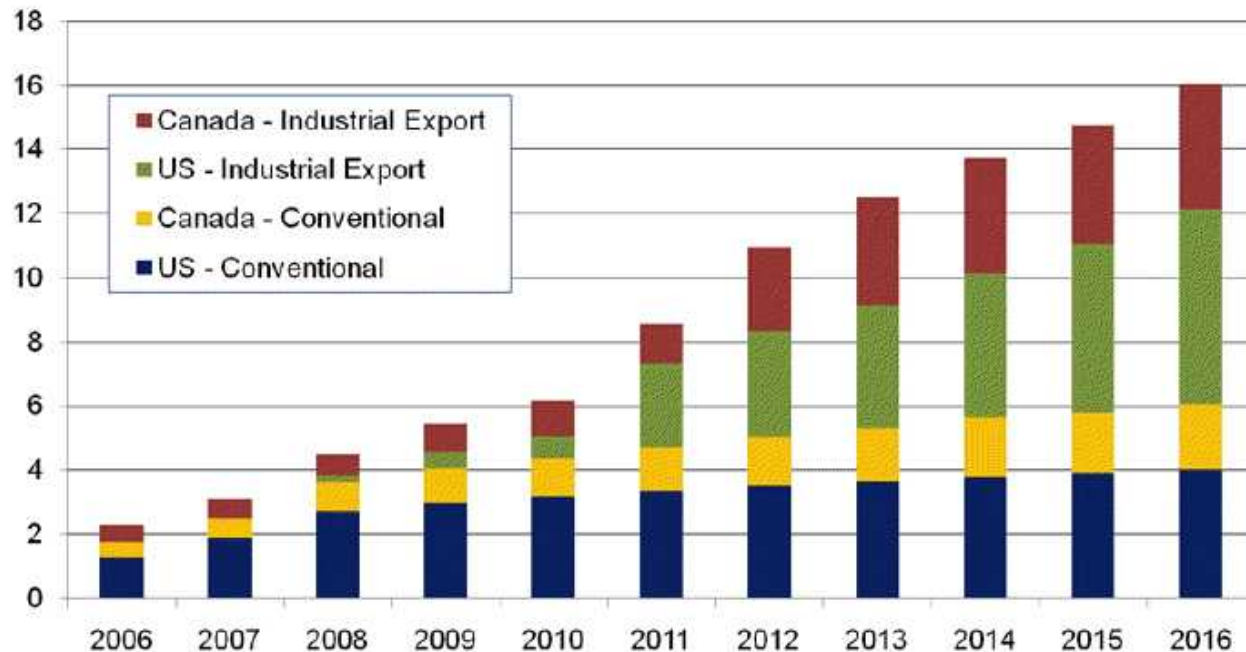
COL. W.F. CODY
BUFFALO BILL
WILL APPEAR
AT EVERY PERFORMANCE

A COMPANY OF WILD WEST COWBOYS, THE REAL ROUGH RIDERS OF THE WORLD WHOSE DARING EXPLOITS HAVE MADE THEIR VERY NAMES SYNONYMOUS WITH DEEDS OF BRAVERY.

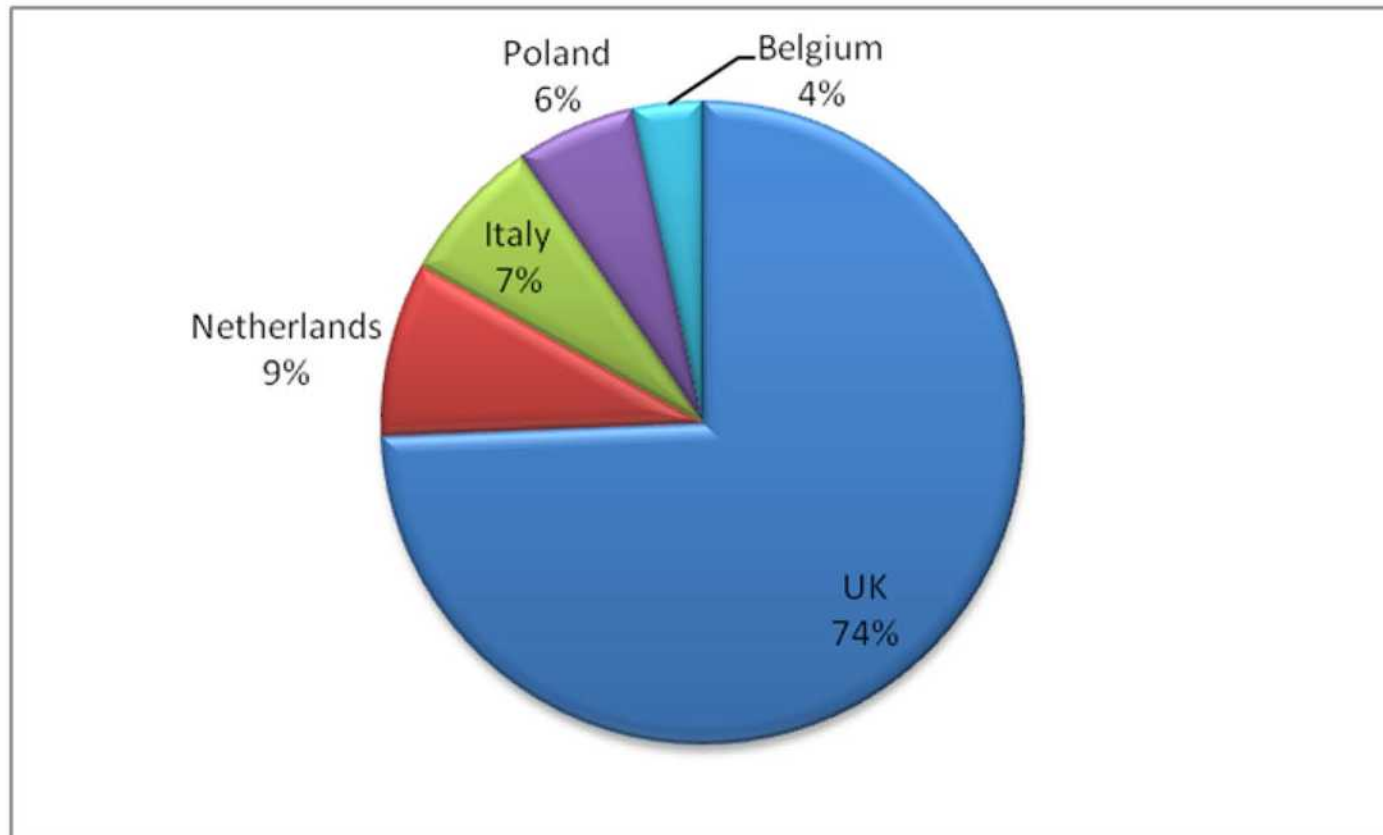
Increasing European Demand for Biomass

Wood Pellet Production will continue to increase rapidly with the majority of new capacity coming from industrial export facilities

Wood Pellet Production (2006-2016) - North America
Million tons



New Western European wood biomass demand, 2007-16, 72.1 mm green tons across top five countries

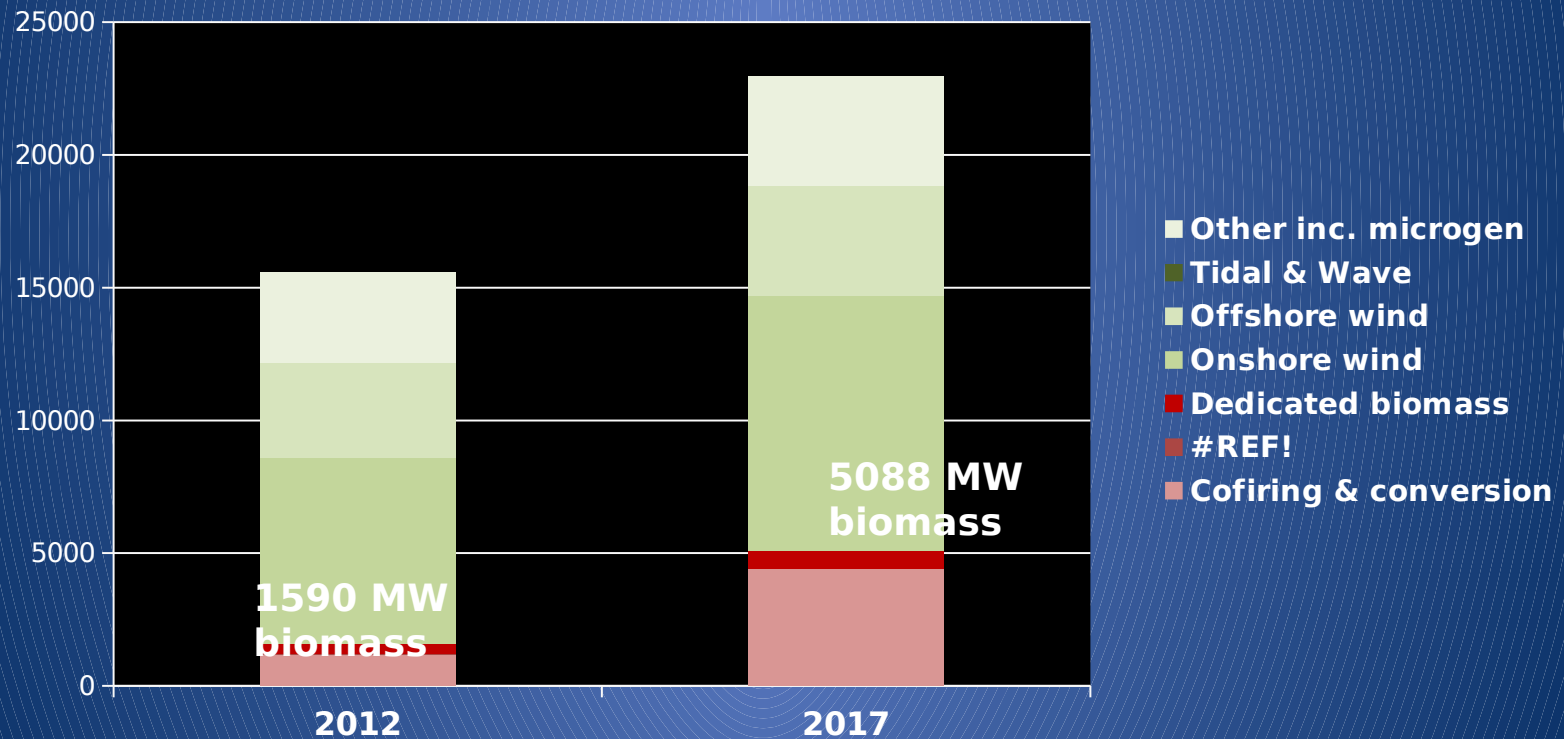


Top five countries represent 83% of potential new demand in Western Europe.

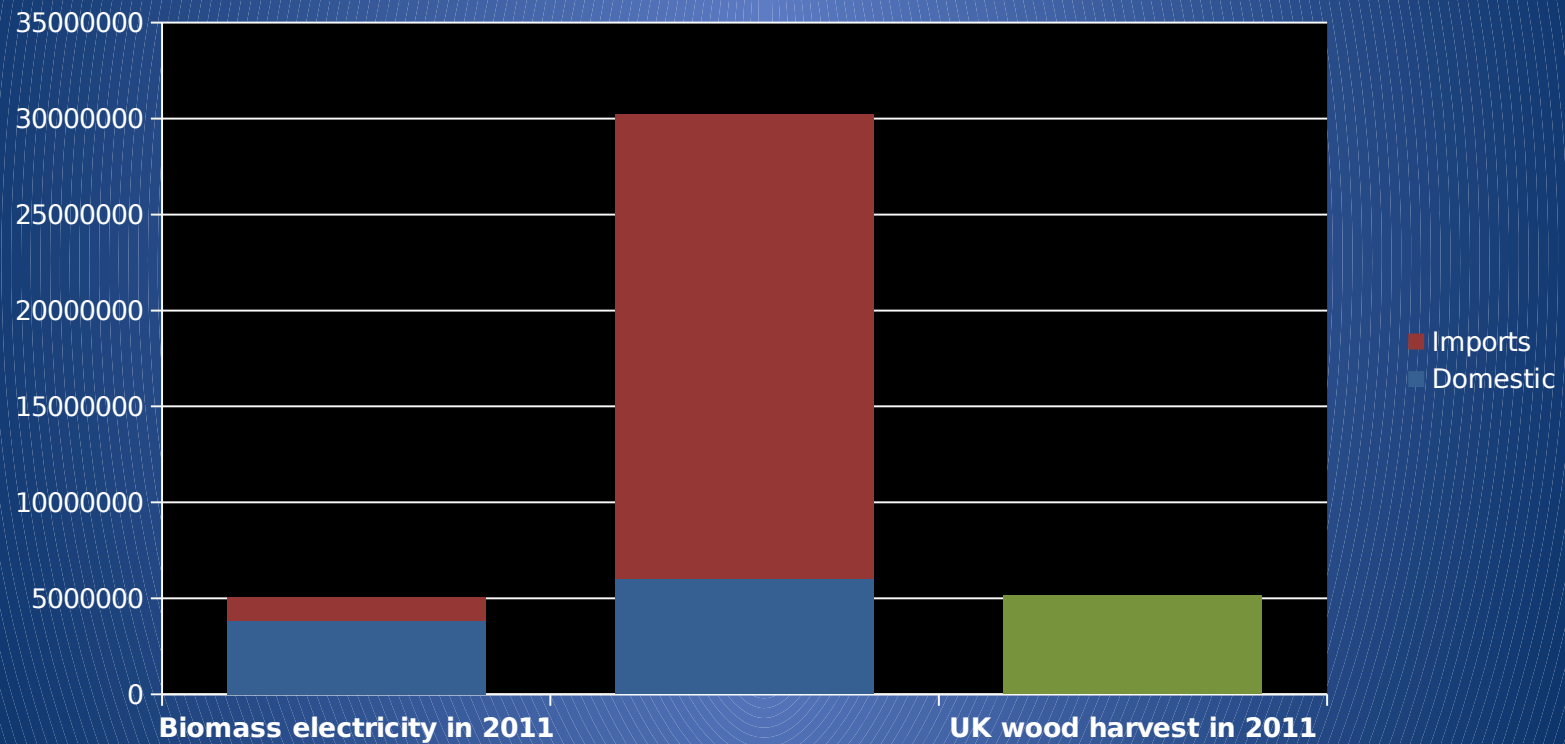
Source: RISI European Wood Biomass Projects Database.

www.risi.com/eurobiomassdatabase

Future UK Biomass Electricity Growth



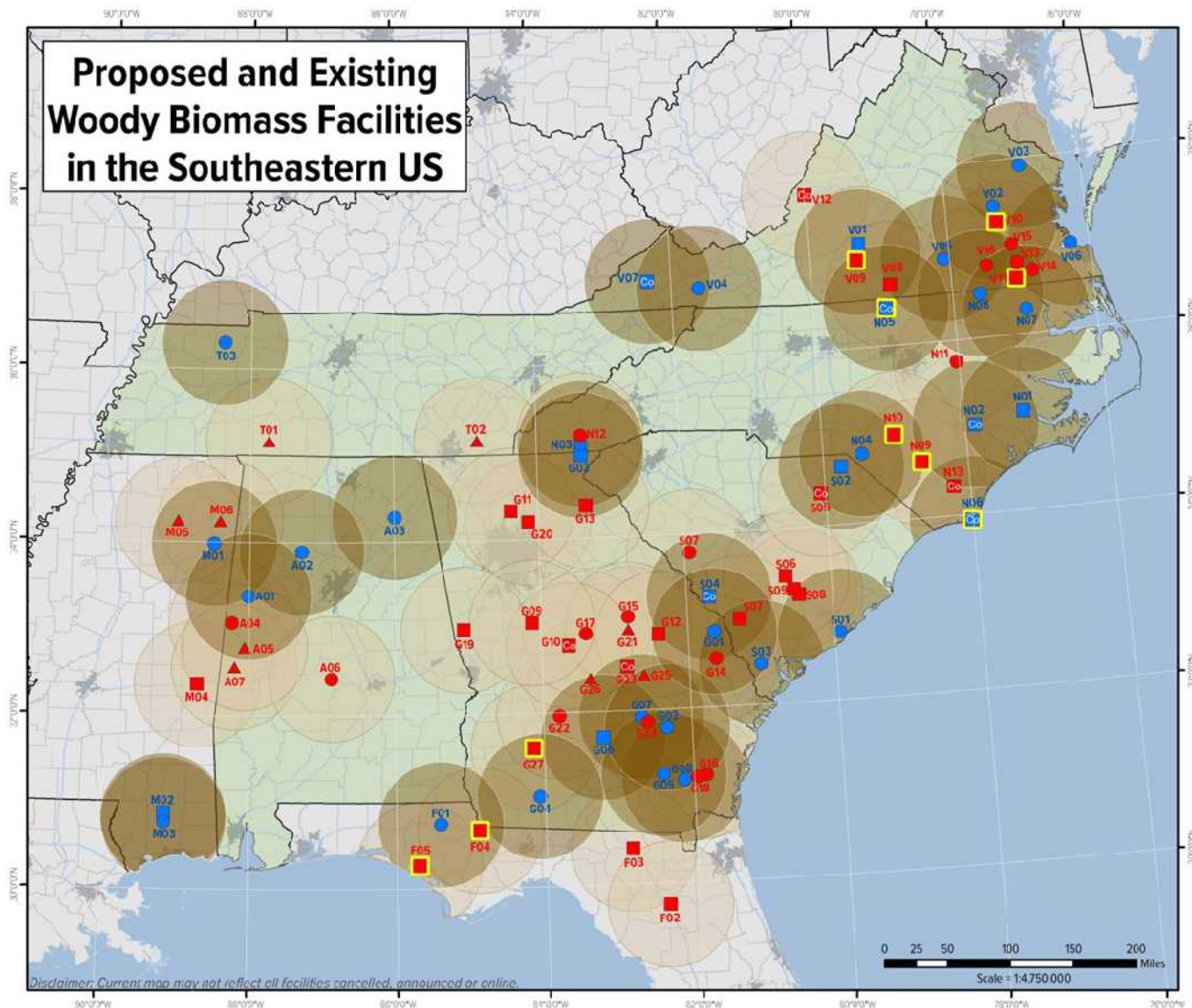
Future UK Biomass Electricity Growth



Wood Pellet Exports



Proposed and Existing Woody Biomass Facilities in the Southeastern US



ABOUT THE MAP:

The Proposed and Existing Woody Biomass Facilities in the Southeast map was created based on third party data as a list of proposed and existing woody biomass facilities known to SELC. The list was primarily compiled through internet based research of the companies announcing woody biomass facility proposals, forestry agencies, biomass groups, and state environmental permitting divisions. The map is thought to be accurate, but may still contain errors since it is derived from varied sources. The brown circle surrounding each unit has a 50 mile radius, representative of the sourcing area where wood feedstock will be gathered for each facility. These circles are meant to be illustrative of the potential forestry impacts where many facilities are proposed close together. Some facilities propose a larger sourcing area, up to 200 miles. Actual sourcing areas would also be shaped based on road networks making them more irregular than the illustrative circles shown here, however a similar comprehensive image would emerge.

LEGEND

Type of Wood Biomass Facility

- Fuel Pellet Plant - Operating
- Fuel Pellet Plant - Proposed
- Electricity Generation - Operating
- Electricity Generation (converted Coal EGU) - Operating
- Electricity Generation - Proposed
- Electricity Generation (converted Coal EGU) - Proposed
- ▲ Cellulosic Ethanol Producer - Proposed
- Combined Heat & Power (color varies)

Approximate Sourcing Area

- Operating Facility
- Proposed Facility

Primary Data Sources:
Georgia Forestry Commission; Southern Alliance for Clean Energy (SACE); Biomass Magazine; Forisk Consulting
GIS Data Sources: US Census Bureau (2010), Tele Atlas North America (2011)

Map updated April 29, 2013
Please direct map inquiries to:
Jovian Sackett, GIS Analyst
jsackett@selcnc.org
(919) 967-1450

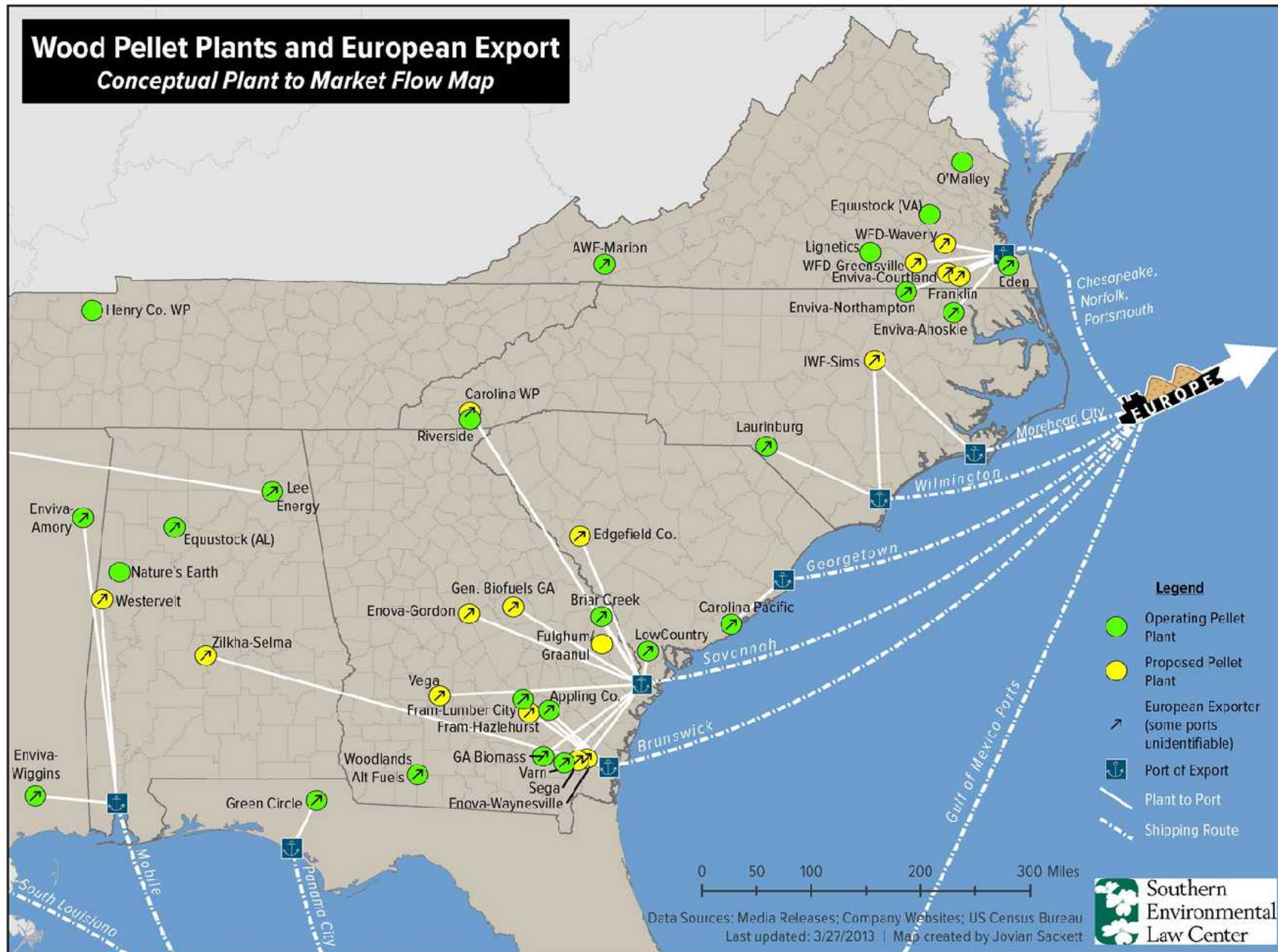


Disclaimer: Current map may not reflect all facilities cancelled, announced or online.

0 25 50 100 150 200 Miles
Scale = 1:4750,000

Wood Pellet Plants and European Export

Conceptual Plant to Market Flow Map



Enviva wetland clearcut in Northeastern North Carolina





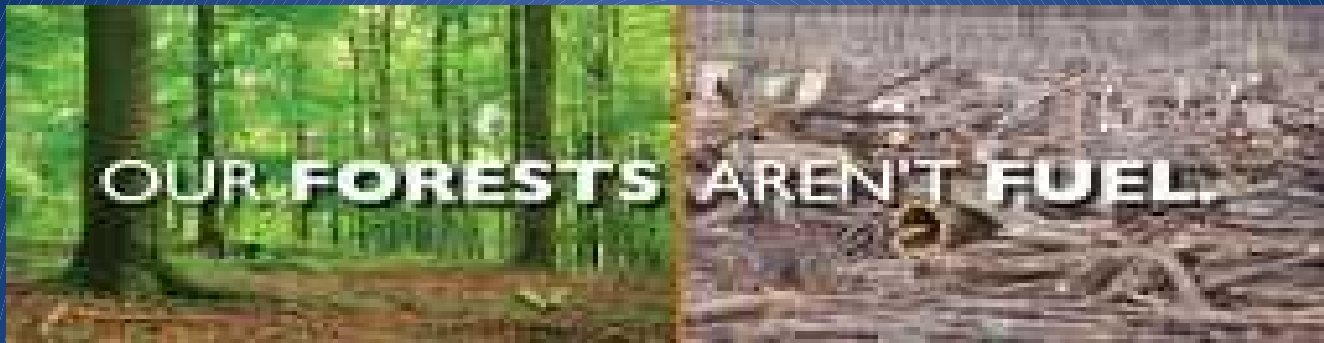
Enviva - Ahoskie, NC Pellet Plant

Photo Credit: Southern Environmental Law Center, January 23, 2013



Enviva - Ahoskie, NC Pellet Plant

Photo Credit: Southern Environmental Law Center, January 23, 2013



TOP CORPORATE DRIVERS

DOMINION
POWER
(US Utility)

ENVIVA
pellet
manufactur
er

DRAX
(UK's
largest
utility)



DOGWOOD
A L L I A N C E

Scot Quaranda

scot@dogwoodalliance.org

P.O. Box 7645

Asheville, NC 28802

828-251-2525 x18 (office)

828-242-3596 (cell)

www.dogwoodalliance.org